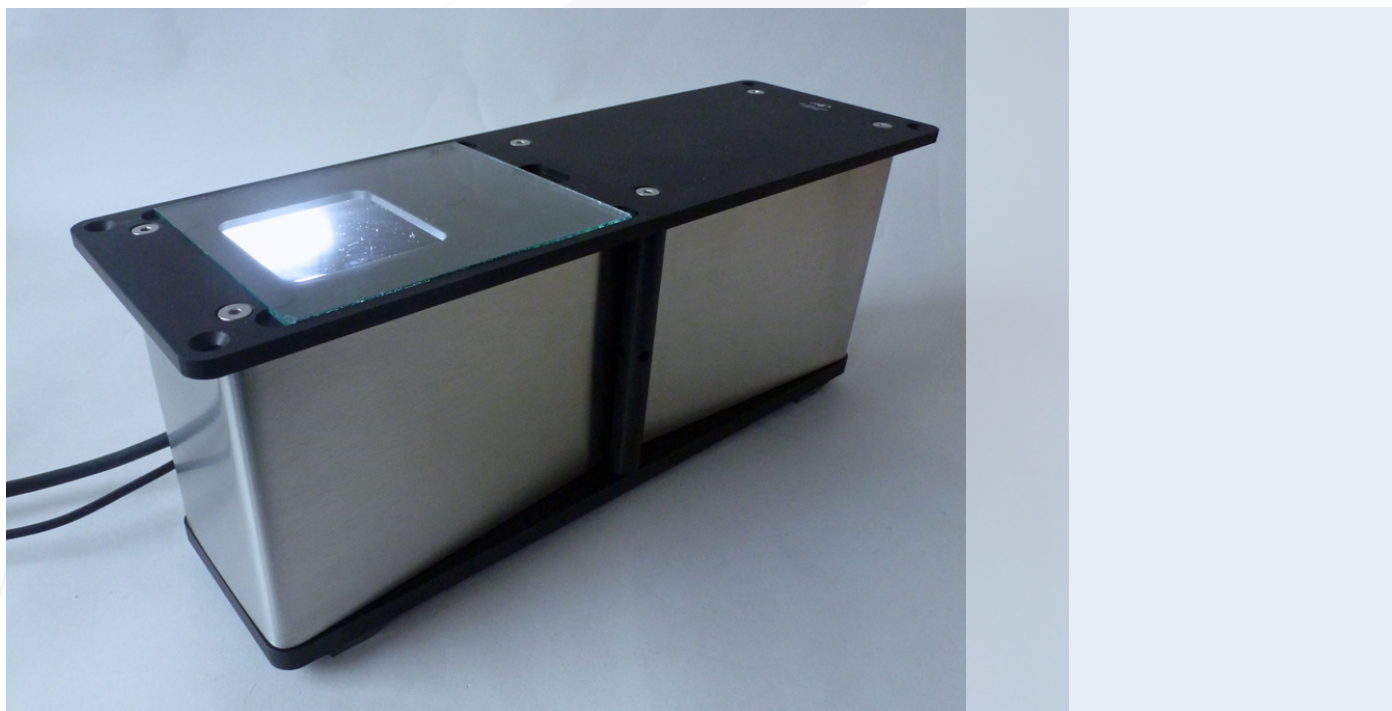




Inverse optical Imaging Module

Inverse Controller



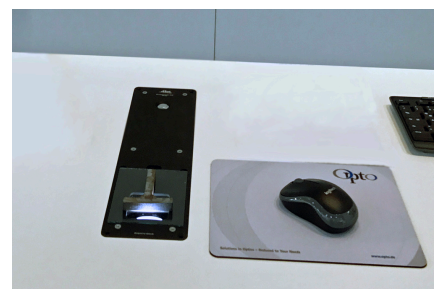
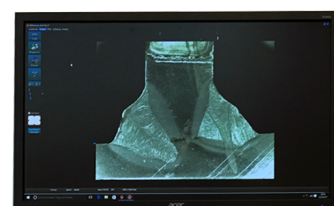
For instant micro-imaging of a wide variety of samples, Opto offers its bench-integrated inverse imaging unit. This innovative 'under-bench' design features integrated camera, high definition optics, LED ring light and optional software for acquisition and measurement.

The optimised design enables production samples to be placed onto the glass plate where it is instantly imaged with no focusing required.

All optical components are housed in a compact metal cover that is designed to be integrated at surface level with your working area.

Optical configuration:

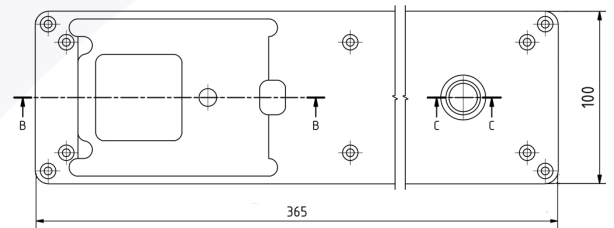
- Inverse Optic with fixed focal length
- Digitale Camera (4,92 Mpix resolution, CMOS, USB 3.0)
- LED Ringlight





Technical Data

- Inverse optical Imaging Modul
- Power supply and integrated USB 3.0 cable for PC
- Size: 365 x 100 x 123 (L x H x D)
- PC Specification: Windows 7 with USB 3.0 port
- Graphic card: AGP or PCI Express Graphics card (min. 1 GB dedicated memory)



Variations

Art.-Nr.	Description	FoV in mm	Magnification	Software
100-INV-050	Inverse Controller Macro 5x	26,5x20	5x	None
100-INV-060	Inverse Controller Macro 6x	20x15	6x	None
100-INV-150	Inverse Controller Macro 15x	8,4x6,3	15x	None
100-INV-300	Inverse Controller Macro 30x	4,2x3,2	30x	None

The same setup is available with integrated Pixelfox Measurement Software for basic Measurements

Art.-Nr.	Description	FoV in mm	Magnification	Software
100-INVP-050	Inverse Controller Macro 5x PIFO	26,5x20	5x	PixelFox
100-INVP-060	Inverse Controller Macro 6x PIFO	20x15	6x	PixelFox
100-INVP-150	Inverse Controller Macro 15x PIFO	8,4x6,3	15x	PixelFox
100-INVP-300	Inverse Controller Macro 30x PIFO	4,2x3,2	30x	PixelFox

For additional functionality, our partners www.dhssolution.com offer this hardware with enhanced software functionality including:

- Enhanced Image Acquisition
- Image Databasing & archiving
- Integrated auto reporting functionality
- Automated weld analysis modules and much more

