

# IsoMet<sup>®</sup> Low Speed

Precision Sectioning Saw



*Designed for cutting various  
materials with minimal deformation*

# Versatile

The IsoMet® Low Speed Saw is a precision sectioning saw designed for cutting various types of materials with minimal deformation. Its low kerf loss capability and great versatility in holding all types of sample shapes and configurations, gives today's laboratory a precision sectioning tool capable of cutting virtually any material including brittle or ductile metals, composites, cements, laminates, plastics, electronic devices and biomaterials.



## 1 Gravity-Fed Specimen

The IsoMet Low Speed cutting arm uses a gravity fed system of weights in 25g increments, allowing the user to achieve a repeatable desired surface quality. The many Buehler sample chucks allow the user to cut a variety of different sizes and shapes, making setup fast and easy.

## 2 Micrometer

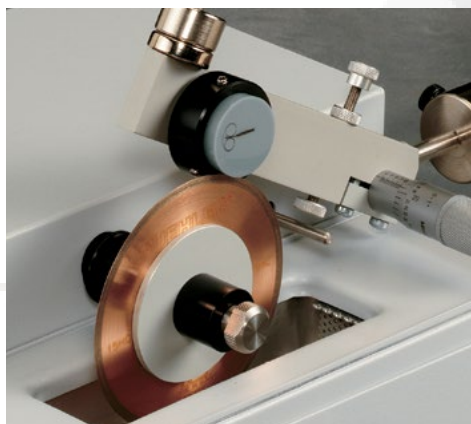
The precision micrometer allows the user to position the sample with an accuracy of  $\pm 5\mu\text{m}$  or  $\pm 0.0001\text{in}$ . The user will always be able to cut at exactly the right place.

## 3 Simple Controls

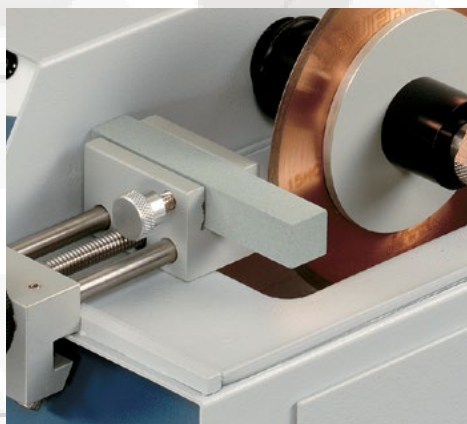
The IsoMet Low Speed is very easy to control. The user is able to adjust motor speed between 0 and 300 rpm to achieve the best surface quality.

## 4 Diamond Wafering Blades

The IsoMet Low Speed accepts a wide variety of HC, LC, and CBN blades in 3in, 4in, and 5in sizes. See Buehler's offering for blades.



Mounted samples can be sectioned effectively with proper selection of chucks and flanges.



The optional dressing chuck (11-1196) allows dressing of the wafering blade without interrupting the sectioning process.



The optional Splash Guard Kit (11-1199) prevents coolant from spraying.





# Ordering Information



## IsoMet® Low Speed

**Includes:**

(Includes 4in [102mm] IsoMet Blade for general sectioning, assorted weights, dressing stick, flanges and the following chucks: single saddle, irregular specimen and wafer)

Part Number	Voltage/Frequency	Units
11-1280-160	115VAC, 50/60Hz	Inches
11-1280-250	230VAC, 50/60Hz	Millimeters
11-1280-170	115VAC, 50/60Hz	Millimeters

**Dimensions:** 10.5in [267mm]W x 12in [305mm]D x 25.5in [571mm]H  
**Weight:** 25lbs [11.3kg]

## IsoMet® Low Speed Saw Accessories

Swivel Arm Assembly  
11-1181



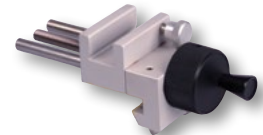
Goniometer  
11-2381



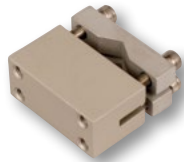
Splash Guard Kit  
11-1199



Manual Feed Control  
Dressing Chuck  
11-1196



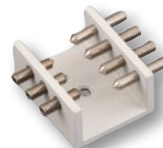
Small, Double  
Saddle Chuck  
11-1183  
Sample Max: 0.875in [22mm]



Bar & Tube Chuck  
11-1184  
Sample Max: 0.5in [13mm]



Irregular Specimen  
Chuck  
11-1185  
Sample Max: 1in [25mm]



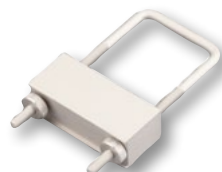
Mount Chuck  
11-1189  
Sample Max: 1-1.25in [25-32mm]



Single Saddle Chuck  
11-1187  
Sample Max: 0.75in [19mm]



Small Bone Chuck  
11-1194  
Sample Max: 1.5in [38mm]



Wafer Chuck  
11-1186  
1.125 x 2in [29 x 51mm]



Vacuum Chuck for  
Glass Slides  
11-1188  
1.06 x 1.8in [27 x 46mm]



# Ordering Information

## Precision Sectioning Blades for IsoMet® Cutters, 0.5in [12.7mm] Arbor (Qty 1)

[Blade Thickness is listed under Part Number]

Recommended Use	3in [76mm]	4in [102mm]	5in [127mm]	Dressing Stick*
<b>IsoMet 30HC</b> - Polymers Rubber, Soft Gummy Materials			11-4239 0.030in [0.76mm]	Blade should not be dressed
<b>IsoMet 20HC</b> - Aggressive general sectioning of ferrous and non-ferrous materials			11-4215 0.020in [0.5mm]	11-1190 11-2490
<b>IsoMet 15HC</b> - Blades for routine use, metal matrix composites, PC boards, bone, titanium, thermal spray coatings	11-4243 0.006in [0.15mm]	11-4244 0.012in [0.3mm]	11-4245 0.015in [0.4mm]	11-1190 11-2490
<b>IsoMet 20LC</b> - Hard tough materials, structural ceramics, boron nitride, silicon nitride			11-4225 0.02in [0.5mm]	11-1190 11-2490
<b>IsoMet 15LC</b> - Hard and brittle materials, structural ceramics, glass, electronic substrates, alumina, zirconia, concrete	11-4253 0.006in [0.15mm]	11-4254 0.012in [0.3mm]	11-4255 0.015in [0.4mm]	11-1190 11-2490
<b>IsoMet 10LC</b> - Medium to Soft Ceramics, Glass Fiber Reinforced Composites	11-4283 0.006in [0.15mm]		11-4285 0.015in [0.4mm]	11-1290
<b>IsoMet 5LC</b> - Soft, Friable Ceramics, Composites with Fine Reinforcing, CaF <sub>2</sub> , MgF <sub>2</sub> , Carbon Composites	11-4293 0.006in [0.15mm]		11-4295 0.015in [0.4mm]	11-1290
<b>IsoCut CBN</b> - Ferrous materials, nickel, cobalt, lead-based alloys and super alloys	11-4263 0.006in [0.15mm]	11-5264 0.012in [0.3mm]	11-5265 0.015in [0.4mm]	11-1190 11-2490
Cup Grinder for Ceramic & Geological Materials			11-2740	

\* All Blades (Except 30HC) come with a Dressing Stick included.

### BUEHLER Worldwide Headquarters

#### BUEHLER North and South America

41 Waukegan Road, Lake Bluff, Illinois 60044

**P:** +1 847 295 6500 | 800 BUEHLER (800 283 4537)

**W:** [www.buehler.com](http://www.buehler.com) | **E:** [info@buehler.com](mailto:info@buehler.com)  
[shop.buehler.com](http://shop.buehler.com)

### European Headquarters

#### BUEHLER Germany - Esslingen

ITW Test & Measurement GmbH

**P:** +49 (0) 711 4904690-0

**W:** [www.buehler-met.de](http://www.buehler-met.de) | **E:** [info.eu@buehler.com](mailto:info.eu@buehler.com)  
[www.metallographie.biz](http://www.metallographie.biz)

### BUEHLER France - Dardilly

**P:** +33 (0) 800 89 73 71

**W:** [www.buehler.fr](http://www.buehler.fr) | **E:** [info.eu@buehler.com](mailto:info.eu@buehler.com)  
[www.metallographie.fr](http://www.metallographie.fr)

### BUEHLER United Kingdom - Coventry

**P:** +44 (0) 800 707 6273

**W:** [www.buehler.co.uk](http://www.buehler.co.uk) | **E:** [info.eu@buehler.com](mailto:info.eu@buehler.com)  
[www.metallography.biz](http://www.metallography.biz)

### Asia Headquarters

#### BUEHLER China - Shanghai

ITW Test & Measurement (Shanghai) Co., Ltd.

**P:** +86 400 111 8683 | **F:** +86 21 6410 6671

**W:** [www.buehler.cn](http://www.buehler.cn) | **E:** [info.cn@buehler.com](mailto:info.cn@buehler.com)

### BUEHLER Asia-Pacific

**P:** +86 400 111 8683

**E:** [info.asia@buehler.com](mailto:info.asia@buehler.com)

### BUEHLER Japan

**P:** +81 03 5439 5077 | **F:** +81 03 3452 7220

**W:** [www.buehler.jp](http://www.buehler.jp) | **E:** [info.japan@buehler.com](mailto:info.japan@buehler.com)